



› Sign-up › Logout › Edit Profile › Contact › Suggested Reading › Contributing Authors › Recommended Links › Graffiti

Inside

- › Articles By Category
- › Articles By Date
- › Articles By Title
- › Tips By Category
- › Tips By Date
- › Tips By Title

Categories

- 3D
- AccuDraw
- Animation / Rendering
- Behind the Scenes
- Cells
- Colours
- Conversion / Translation
- Coordinate Input
- Database
- Design Settings
- Dimensions
- DWG
- EDG
- Element Manipulation
- Element Properties
- Element Selection
- Freeware / Shareware
- Interface Look and Feel
- Internet / E-Links / Links
- Keyins
- Levels
- Line Styles
- MicroStation XM
- Models
- MSM Archive
- Other
- Plotting / Printing
- Presentations
- Programming/Automation
- Raster Images
- Reference Files
- Tags / Data Fields / Fields
- Text / Fonts / Annotation
- Views
- Windows (Interacting with)

[Printable Version](#)

[E-mail this Article to a Friend](#)

February 12th, 200

Drawing Composition, Paperspace and Viewports UPDATED

Page 1 of 2

[page 2](#)

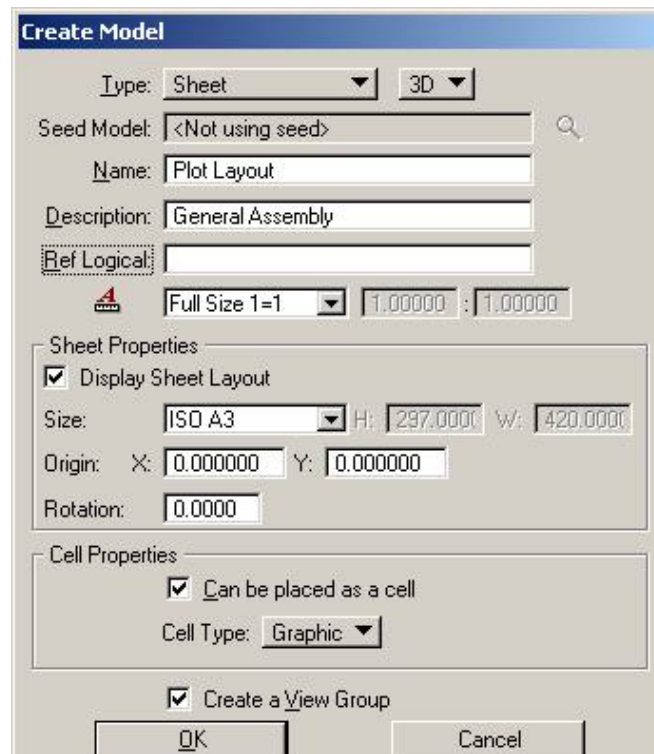
Submitted by the platform hooligan himself, *Lawrence Eaton*, this one pager discusses how to save a MicroStation V8 DGN file to an AutoCAD DWG and ensure compatibility with paperspace and viewports. It touches on how to compose a drawing of a 3D widget.

Updated 2004-03-15 for clarity

With the introduction of MicroStation v8, the concept of *models* was introduced to aid with DWG interoperability and extending the capabilities of MicroStation into the future.

Models allow MicroStation users the ability to create multiple *Design Models* and *Sheet Models* for any one design file. Of course if you're completely new to the idea of using models, you may benefit from reviewing this article first: [Understanding Models](#). The remainder of this article will involve a simple 3D file in which you'll create a sheet model and compose a drawing. To get started, download [this file](#).

In preparation for saving this design file to a DWG with viewports, create a new sheet model with the sett shown in the image below.



WorkSpaces/Configuration

At this moment you have created a model that will automatically be converted to an AutoCAD paperspace layout when the file is converted from DGN to DWG. The *sheet layout* element that you see on your screen is a transient element and can actually be used by the plotting process in lieu of a fence. If you prefer to turn it simple toggle the *Display Sheet Layout* option in the *Model Properties* dialog.

Continuing on, let's add some standard A3 borders.

From the *Reference* dialog, select *Attach*.

Navigate to ... \workspace\examples\borders\iso\ and select *A3-Border.dgn*.

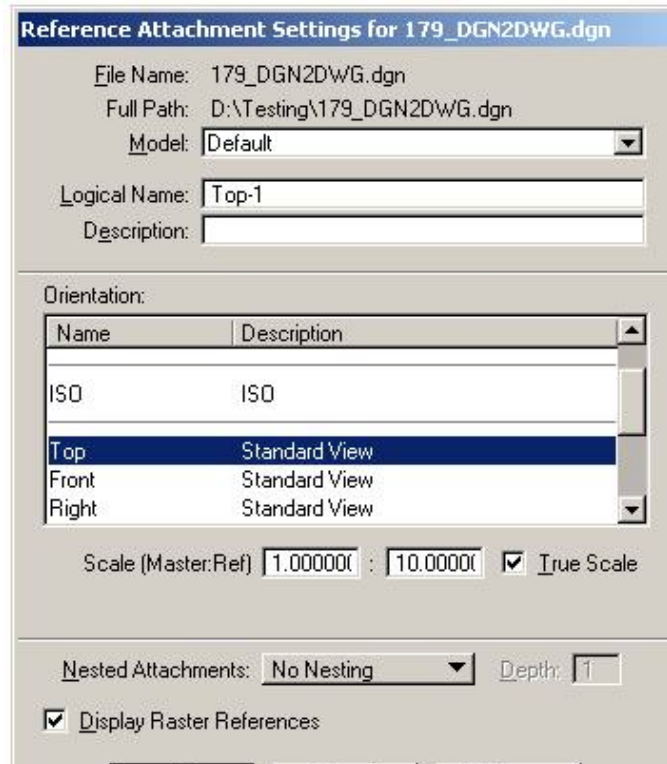
Set the *Attachment Method* to *Coincident* and press *OK*.



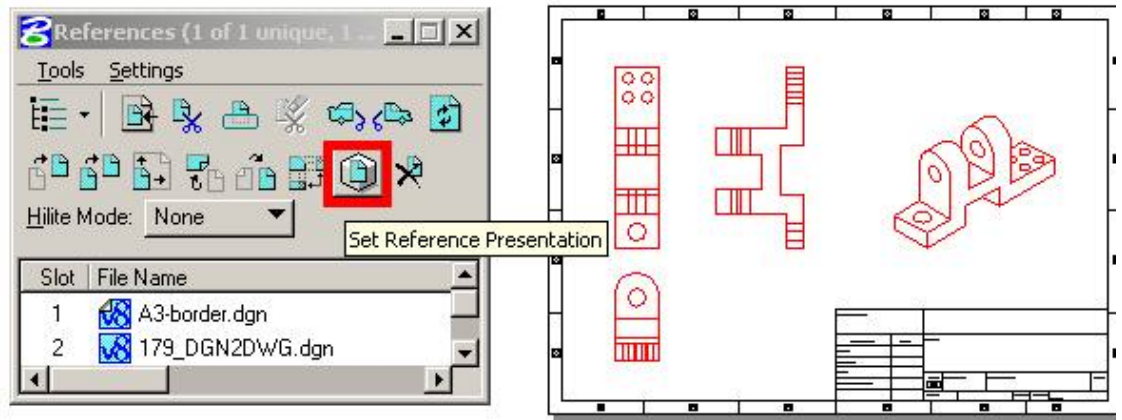
The next step is to compose a drawing layout of the widget found in the default model.

From the reference dialog, attach the file to itself with the settings shown below.

Position the top view within the borders and somewhat on the left side.

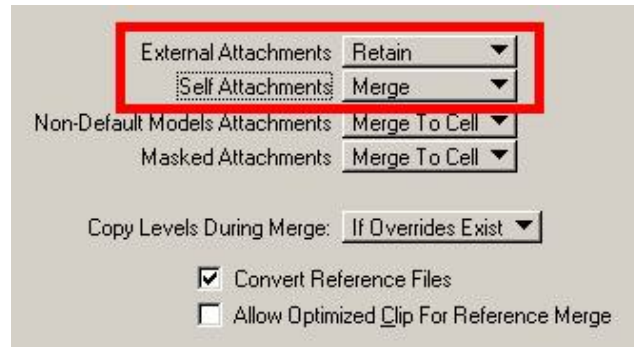


To fold off the remaining views, select *Copy/Fold Reference*, adjust the settings and follow the prompts. If you wish, you can also add the right isometric and set the presentation to *True Hidden Line*. The completed layout will be similar to this:



Excellent! You are now ready to export the file to DWG - complete with Modelspace, Paperspace and Viewports.

Select *File > Save As...*, set the format to save to to *AutoCAD Drawing Files (DWG)* and then poke on the *Options* button. From this dialog, navigate to the *References* tab and take note of the available options:



Lawrence Eaton

Lawrence was last seen waving hysterically from a gondola while the Louvre has flooding. On top of that, holiday was a mess. Lines, arcs and circles were everywhere, cells were imploding around him and and th blessed DWG's (with thier little neo socks) were littered around him as if it was recess time at school and were skulking off to the bikesheds for a quick smoke.

lawrence.eaton@bentley.com

[Printable Version](#)

[E-mail this Article to a Friend](#)

February 12th, 20C

[Sign-Up](#) | [Logout](#) | [Edit Profile](#) | [Contact](#) | [Suggested Reading](#) | [Contributing Authors](#) | [Recommended Links](#)

Copyright © 2006 AskInga. All rights reserved. [Terms of Use](#), [Legal](#), and [Privacy](#) [click here](#)