



› Sign-up › Logout › Edit Profile › Contact › Suggested Reading › Contributing Authors › Recommended Links › Graffiti

Inside

- › Articles By Category
- › Articles By Date
- › Articles By Title
- › Tips By Category
- › Tips By Date
- › Tips By Title

Categories

- 3D
- AccuDraw
- Animation / Rendering
- Behind the Scenes
- Cells
- Colours
- Conversion / Translation
- Coordinate Input
- Database
- Design Settings
- Dimensions
- DWG
- EDG
- Element Manipulation
- Element Properties
- Element Selection
- Freeware / Shareware
- Interface Look and Feel
- Internet / E-Links / Links
- Keyins
- Levels
- Line Styles
- MicroStation XM
- Models
- MSM Archive
- Other
- Plotting / Printing
- Presentations
- Programming/Automation
- Raster Images
- Reference Files
- Tags / Data Fields / Fields
- Text / Fonts / Annotation
- Views
- Windows (Interacting with)

[Printable Version](#)

[E-mail this Article to a Friend](#)

June 3rd, 2003

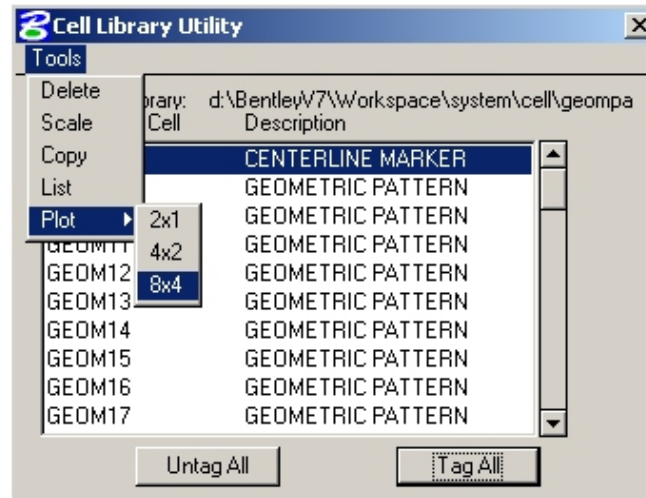
How to convert V7 cells into DWG blocks

Page 1 of 1

With thanks to *Eric Cooper* for contributing this tutorial that will show you how to convert MicroStation V7 cells into DWG blocks.

When sharing data between AutoCAD and MicroStation users it may be necessary to become rather creative in your workflows. Take the issue of saving cells in a cell library out to DWG blocks. Although there may be more than one way of accomplishing this, this is the method we use in our shop and uses a utility called *CellUtil* which is available from [Snutter](#).

To get started, create a new design file and attach the cell library you want to convert to DWG blocks. We now need to place one instance of each cell into the file. Of course you can do this manually, but using Snutter's CellUtil makes this a snap to do. Just load the app, go to *Tools > Plot* and select the appropriate option.

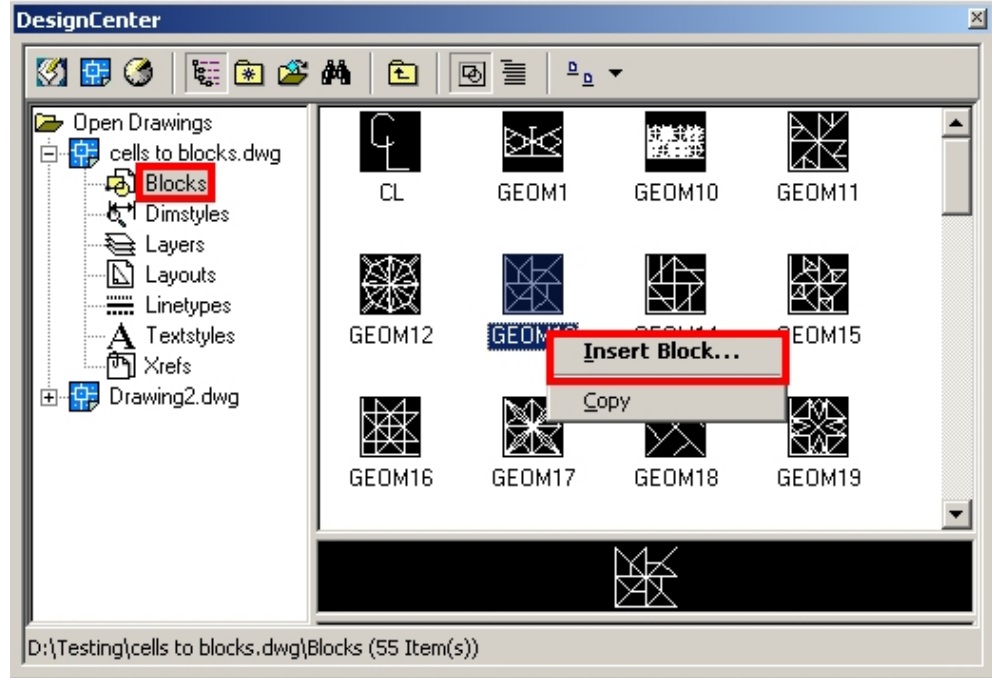


Once the cells have been placed into the design file, export the file to a DWG file and open it in AutoCAD.

In AutoCAD, delete all the entities and then create either create a new DWG file or open the DWG file that you need to place the blocks into.

In the new file go to *Tools > AutoCAD DesignCenter* and click on the + beside the exported drawing name. In there you will see a category called *Blocks* and each individual block will be shown on the right side. To insert a block, simply highlight it, do a right-click and select the *Insert Block* option. That's it. Like Inga says, it's as easy as 1,2, and 3!

WorkSpaces/Configuration



Page 1 of 1

Eric Cooper

Eric's a lucky guy in that he's worked for companies that have used both MicroStation and AutoCAD and therefore has a skill-set to be admired. Eric has used nearly every version of AutoCAD ever invented since 1986 and has used MicroStation since 1989. Eric is also a strong believer in customization and the productivity gains you can get from a well designed and customized interface.

mr.ecooper@virgin.net

[Printable Version](#)

[E-mail this Article to a Friend](#)

June 3rd, 2003

[Top of Page](#)

[Site Contents](#) | [Advanced Search](#) | [Tech Support](#) | [Linking and XML Feeds](#) | [Graffiti](#) | [Home](#)

[Sign-Up](#) | [Logout](#) | [Edit Profile](#) | [Contact](#) | [Suggested Reading](#) | [Contributing Authors](#) | [Recommended Links](#)

Copyright © 2006 Askinga. All rights reserved. [Terms of Use](#), [Legal](#), and [Privacy](#) click here