



› Sign-up › Logout › Edit Profile › Contact › Suggested Reading › Contributing Authors › Recommended Links › Graffiti

Inside

- › Articles By Category
- › Articles By Date
- › Articles By Title
- › Tips By Category
- › Tips By Date
- › Tips By Title

Categories

- 3D
- AccuDraw
- Animation / Rendering
- Behind the Scenes
- Cells
- Colours
- Conversion / Translation
- Coordinate Input
- Database
- Design Settings
- Dimensions
- DWG
- EDG
- Element Manipulation
- Element Properties
- Element Selection
- Freeware / Shareware
- Interface Look and Feel
- Internet / E-Links / Links
- Keyins
- Levels
- Line Styles
- MicroStation XM
- Models
- MSM Archive
- Other
- Plotting / Printing
- Presentations
- Programming/Automation
- Raster Images
- Reference Files
- Tags / Data Fields / Fields
- Text / Fonts / Annotation
- Views
- Windows (Interacting with)

[Printable Version](#)

[E-mail this Article to a Friend](#)

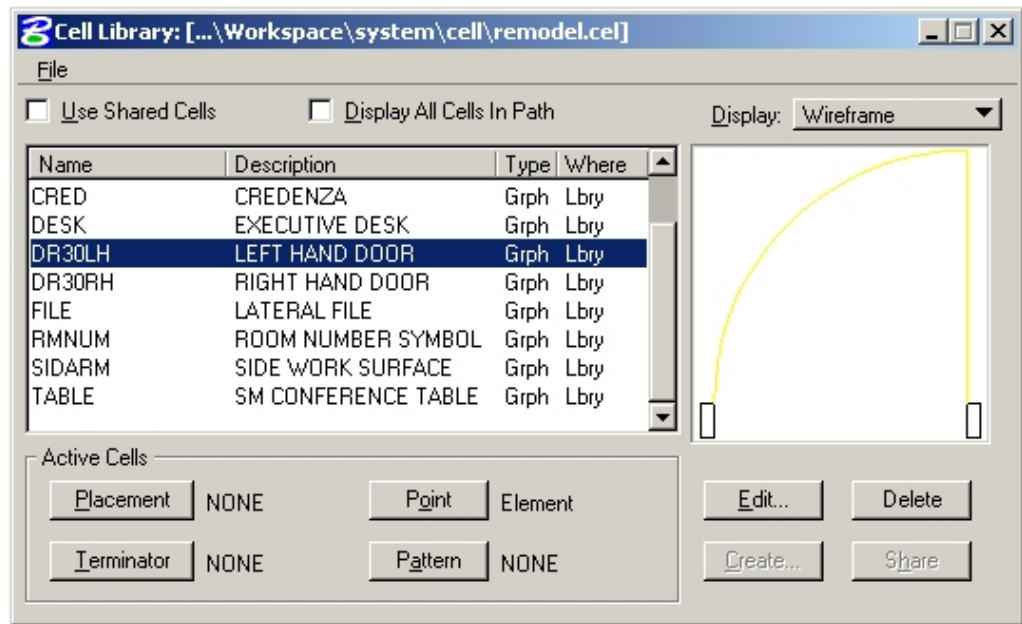
May 14th, 2003

How to convert V8 cells into DWG blocks

Page 1 of 1

So you got a MicroStation V8 cell library and you've now got to turn them into AutoCAD blocks. What do you do? Read along and learn a nifty little trick in this short article.

The image below shows the contents of the delivered *remodel* cell library that's found in the ... \Workspace\system\cell\ folder. Our task is to export this file so that each cell becomes an AutoCAD block. Let's do it!



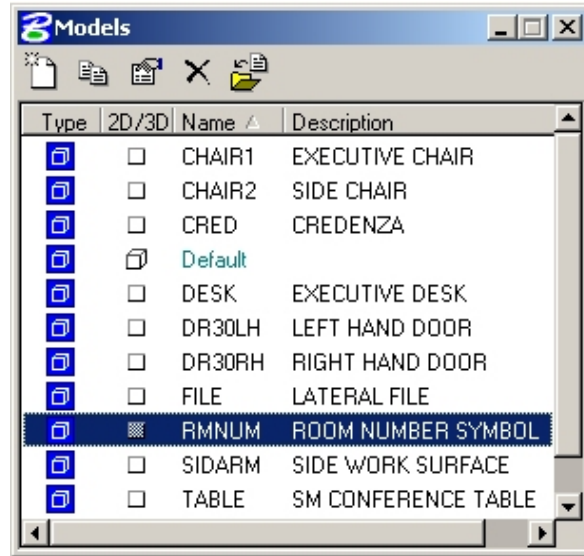
First thing to do is to open the cell library as your active design file. If this is the first time you've done this, it may seem a bit freaky and suggest that you read *Frank Conforti's* article titled [It's a cell! It's a design file! No! It's a model!](#).

Although this is optional, you can also see or verify that each cell is a model by opening the *Models* dialog. To do so, choose one of the following actions:

- Select *File > Models*
- Keyin *model manager*
- Select the *Models* icon from the Primary Tool tool box. Note that it's hidden by default.

In the *Models* dialog you will see that each cell is actually a model as depicted below:

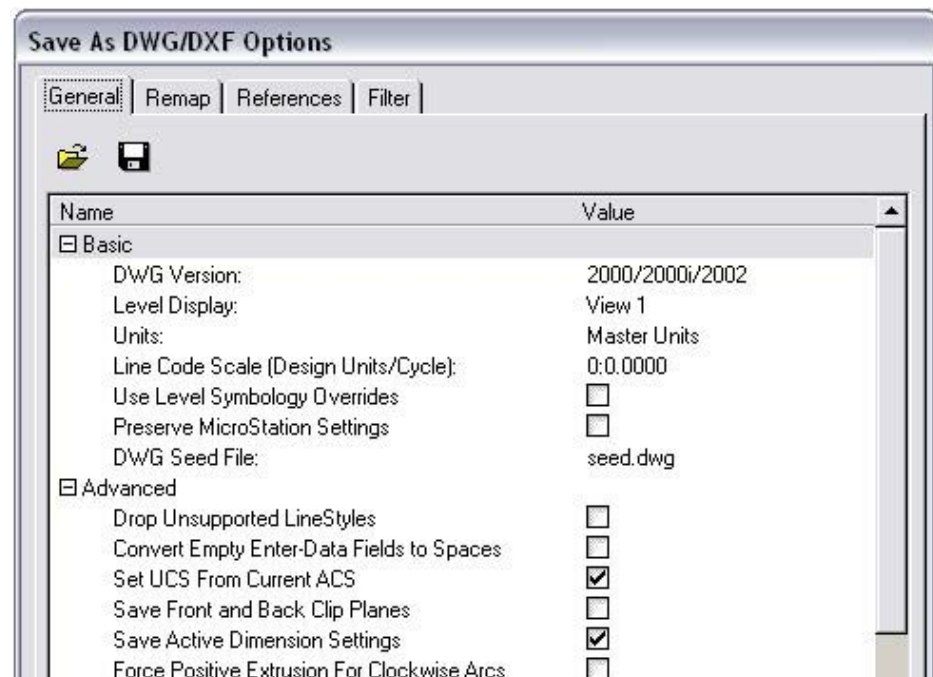
WorkSpaces/Configuration



Alrighty, once you're in the cell library select *File > Save As...* and set the *Select Format To Save:* to *AutoCAD Drawing Files* and poke on the *Options* button.

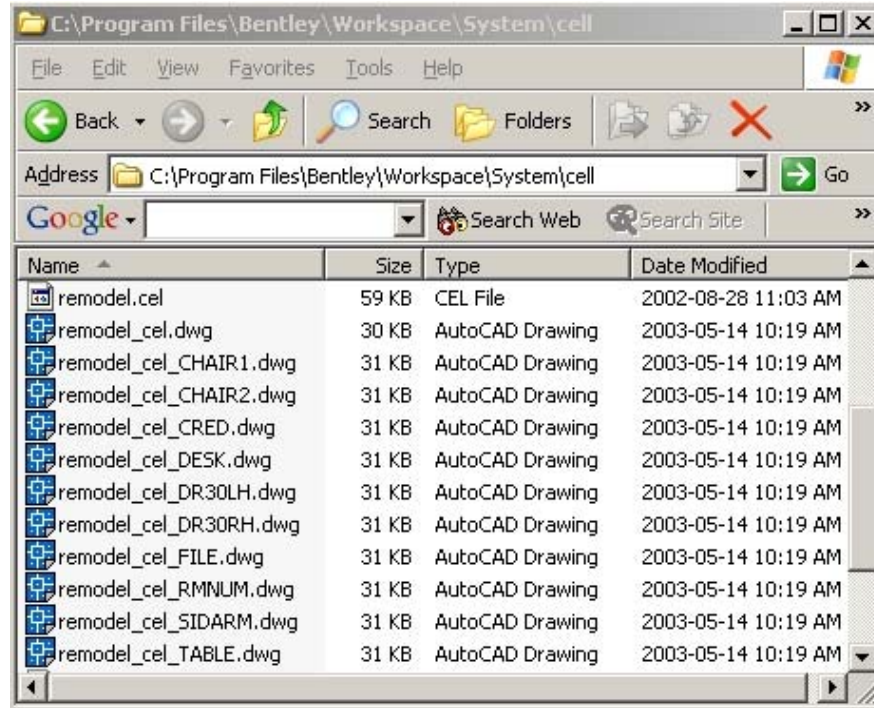


In the *Save As DWG/DXF Options* box, navigate to the *General* tab and expand the *Advanced* option. Ensure that *Non-Default Design Models* is set to *Create Separate Files* which just so happens to be the default.



Then navigate to the *Filter* tab, click on the *Models* button and select the cells you want to export. Once you've confirmed your settings, click *OK* in the *Save As* dialog and let 'er rip!

MicroStation V8 will extract each model into a separate DWG file which is exactly what you wanted! Note that that each resulting DWG file will be prepended with the name of the source cell library.



Page 1 of 1

Inga Morozoff

Often referred to as the *Mother of MicroStation*, Inga can usually be found hunkered down in a hotel room somewhere. If that fails, you can usually find her romping around outside with her dogs. As a last resort, you'll have to head for the hills where she can be found tending to the gardens at [Inga Bend de hand](#).

inga.morozoff@bentley.com

[Printable Version](#)

[E-mail this Article to a Friend](#)

May 14th, 2003

[Top of Page](#)

[Site Contents](#) | [Advanced Search](#) | [Tech Support](#) | [Linking and XML Feeds](#) | [Graffiti](#) | [Home](#)

[Sign-Up](#) | [Logout](#) | [Edit Profile](#) | [Contact](#) | [Suggested Reading](#) | [Contributing Authors](#) | [Recommended Links](#)

Copyright © 2006 AskInga. All rights reserved. [Terms of Use](#), [Legal](#), and [Privacy](#) click here