



› Sign-up › Logout › Edit Profile › Contact › Suggested Reading › Contributing Authors › Recommended Links › Graffiti

**Inside**

- › Articles By Category
- › Articles By Date
- › Articles By Title
- › Tips By Category
- › Tips By Date
- › Tips By Title

**Categories**

- 3D
- AccuDraw
- Animation / Rendering
- Behind the Scenes
- Cells
- Colours
- Conversion / Translation
- Coordinate Input
- Database
- Design Settings
- Dimensions
- DWG
- EDG
- Element Manipulation
- Element Properties
- Element Selection
- Freeware / Shareware
- Interface Look and Feel
- Internet / E-Links / Links
- Keyins
- Levels
- Line Styles
- MicroStation XM
- Models
- MSM Archive
- Other
- Plotting / Printing
- Presentations
- Programming/Automation
- Raster Images
- Reference Files
- Tags / Data Fields / Fields
- Text / Fonts / Annotation
- Views
- Windows (Interacting with)

**Tip of the day - Your MicroStation Medicine**

[Printable Version](#)   [E-mail this MicroStation Medicine to a Friend](#)   Posted June 6th, 2003

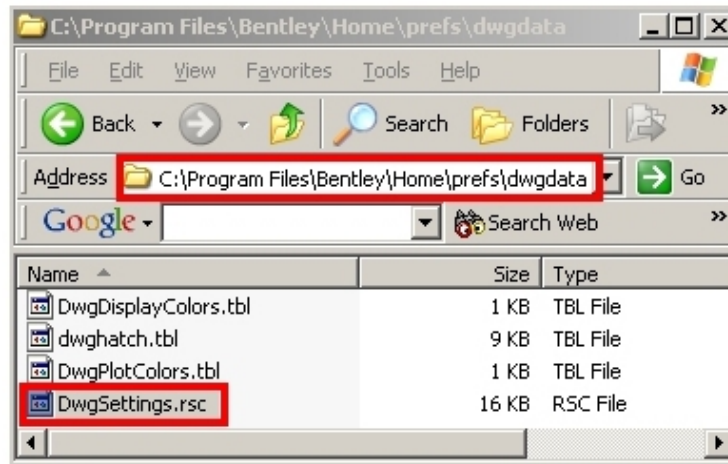
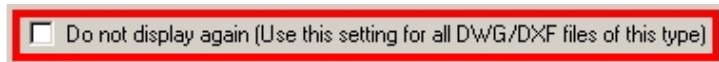
[«« Previous](#)   [Next »»](#)

**How to get the *as delivered* DWG settings back**

Let's suppose that you checked the *Do Not Display Again* box when importing a DWG file...and now you want it back.

All you got to do is nuke ... \Home\prefs\dwgdata\dwgsettings.rsc and all the DWG settings will go back to thier as-installed settings.

With thanks to Uncle Phil for sharing this on the *v8.general* newsgroup.



WorkSpaces/Configuration

---

[Top of Page](#)

[Site Contents](#) | [Advanced Search](#) | [Tech Support](#) | [Linking and XML Feeds](#) | [Graffiti](#) | [Home](#)

[Sign-Up](#) | [Logout](#) | [Edit Profile](#) | [Contact](#) | [Suggested Reading](#) | [Contributing Authors](#) | [Recommended Links](#)

Copyright © 2006 AskInga. All rights reserved. [Terms of Use](#), [Legal](#), and [Privacy](#) [click here](#)