



[Login](#) | [Site Map](#) | [Print](#) | [Store](#)

[Search](#) | [Select Locale](#)

[Quick Links](#)

[verticals](#)

[products](#)

[support](#)

[services](#)

[training](#)

[community](#)

[corporate](#)

Support

Support Tools

- KnowledgeBase
- TechNotes and FAQs
- Remote Support
- Live Chat
- Discussion Groups
- AutoPLANT Error Reports

[service ticket](#)

[live chat](#)

[contact sales](#)

New TechNotes
MDL - The MicroStation Development Language

MicroStation V8 Programming Tools Readme

8271 - V8 Product License File Names

8330 - Bentley Hardware Partners - Work Stations

6225 - Online License Tool FAQ

[>> more](#)



SELECTservices

TechNotes and FAQs

SAVING A DGN TO DWG

[<< Return to Index](#)

Subject: Saving DGN to DWG (with AutoCAD paperspace and viewport compatibility)
Product: MicroStation V8
Operating System: Windows® 2000, Windows XP Professional, Windows XP Home Edition, Windows Me, Windows NT® 4 (SP6 recommended), Windows 98 (Second Edition recommended)
Document Number: 8328

Process: Design Models and Sheet Models

With the introduction of MicroStation V8, the concept of Models was introduced to aide with interoperability and to extend the capabilities of MicroStation into the future.

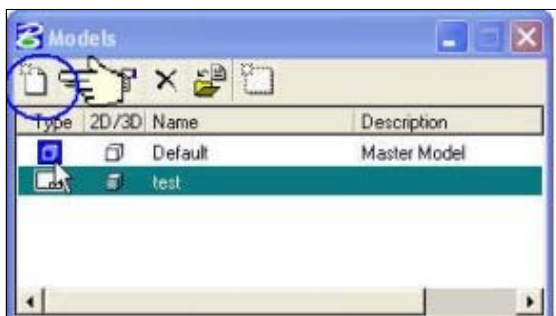
Models allow MicroStation users to create multiple design models and sheet (plot) models for any one DGN drawing.

Models setup (design or sheet) is done via the models icon on the Primary toolbar.



Models Icon

In the Models dialog, click on the furthest left button: "Create Model"



Create Models Button

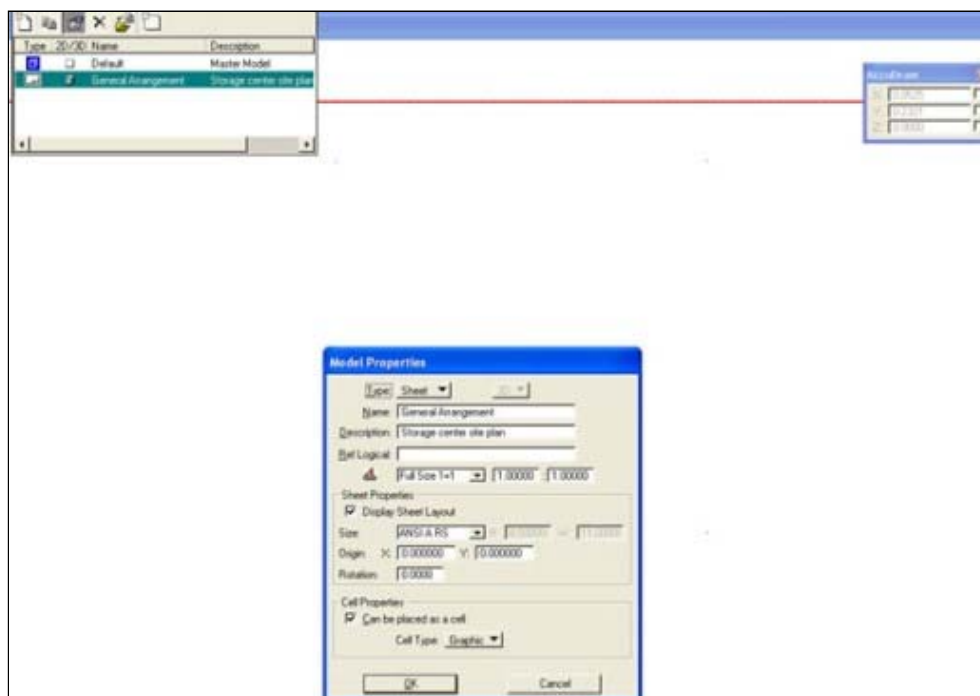
In the Create Model dialog:

Create Model Dialog

1. From "TYPE" choose "SHEET" and then 3D
2. Enter name of the reference e.g. Plot 1:100
3. A description e.g. General Arrangement for Project X
4. Reference Logical name
5. Uncheck "DISPLAY SHEET LAYOUT"
6. Options: Cell Properties (this allows the drawing to be placed as a cell in the future)
7. Click OK

Alternatively ¹:

1. "DISPLAY SHEET LAYOUT" is checked
2. Choose a size of layout from the jump box
3. Options: Cell Properties (this allows the drawing to be placed as a cell in the future)
4. Click OK



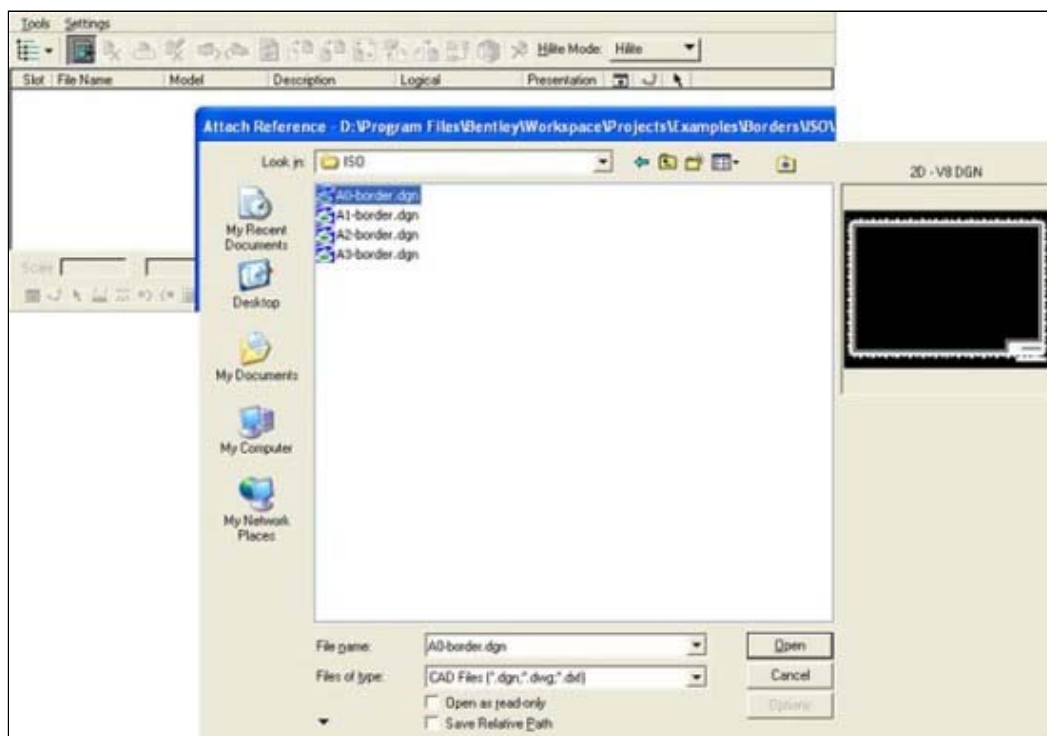
AutoCAD paperspace layout

Your new model will automatically be converted to an AutoCAD paperspace layout when you save it to DWG.

Now we have a design (modelspace) model and a sheet (paperspace) model.

To attach a border to this sheet model:

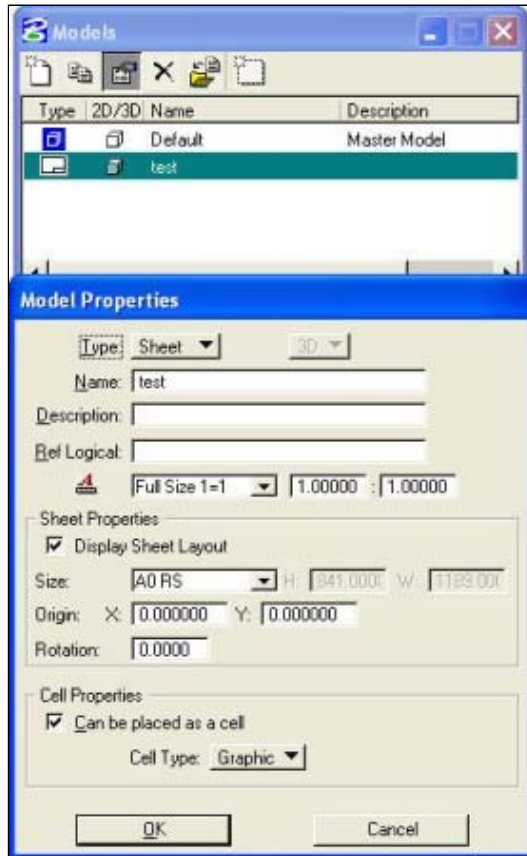
1. Inside your sheet model, click on References and then on Attach. Then navigate to C:\Program Files\Bentley\Workspace\examples\borders\ISO\A0.
2. Select the scale of the border you are going to attach from the Model jump box and then click OK.
3. The reference attaches at the scale specified to the blank sheet model.
4. Using References again, click Attach and navigate to your drawings. Attach either single or multiple drawings and click OK.
5. Manipulate the drawings so that they are placed correctly inside your border file. This can be done by highlighting the reference in question and then using the icons for Move, Copy, Rotate, Scale, and Mirror from the Reference dialog.
6. With 3D drawings, a single drawing can be placed in plan and elevation without the necessity of multiple attachments of the same file. By highlighting the reference and then selecting the Copy/Fold Reference option in the Reference dialog, a user can easily place and orientate references via horizontal or vertical copying.



Attaching border to a sheet model

Alternatively ²:

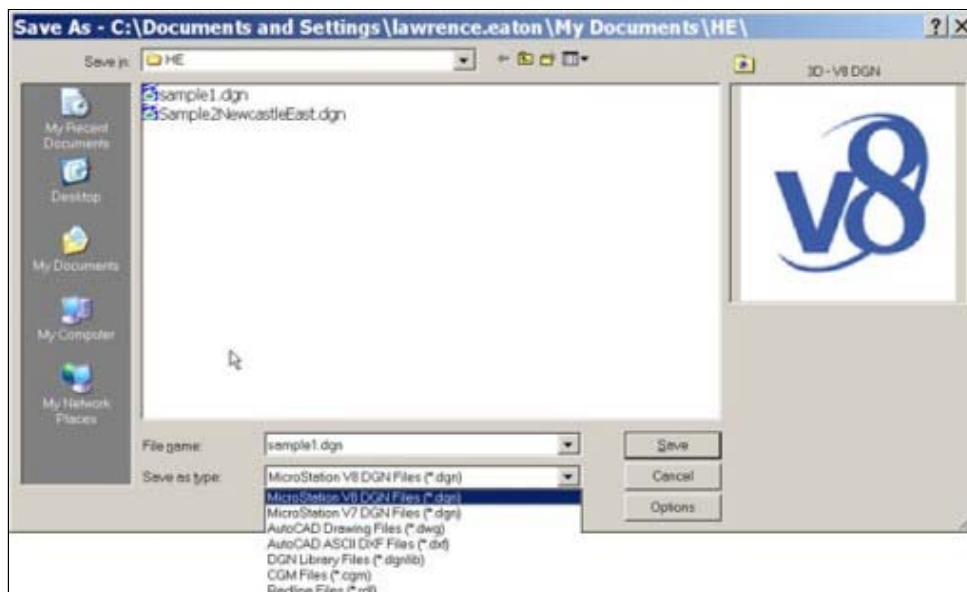
1. Inside your new sheet model, click on the Model icon again. Highlight this new model and select Edit Model Properties.
2. The Model Properties dialog will open. Select the Sheet Properties section and check the Display Sheet Layout option, ON. Then click on the Size jump box and choose from one of the industry standard layouts listed (custom sizes can also be readily made).
3. You will notice that a highlighted boundary is now represented in your sheet model.
4. Select References and attach your border and then your drawing at the scale you require.
5. With the persistent fence boundary in MicroStation there is no need to place around the area desired to be printed.
6. MicroStation will only allow one persistent boundary per model.



Model Properties dialog

Now that you have your design model and your sheet model set up, you can save to a different format.

1. Go to File and Save As.
2. Click on the Save As A Type jump box and choose DWG.
3. Navigate to where you wish the data to be saved and then click Save.
4. MicroStation will now save the DGN to DWG format, and then open that new formatted file in your session of MicroStation where you can check and view it.



Save As dialog

Alternatively:

1. Go to File and select Export.
2. Choose the DGN, DWG, and DXF option and then navigate to where you want the file saved.
3. Click OK.

The Export option in MicroStation will allow you to remain in your SGN session. It saves the file to the location given, with full compatibility with AutoCAD.

¹ = MicroStation V8 2004 Edition

² = MicroStation V8 2004 Edition

How useful was this page?

less 1 2 3 4 5 more

Suggest new content or let us know how we can improve this content (optional):

Submit

[<< E-mail this page](#)